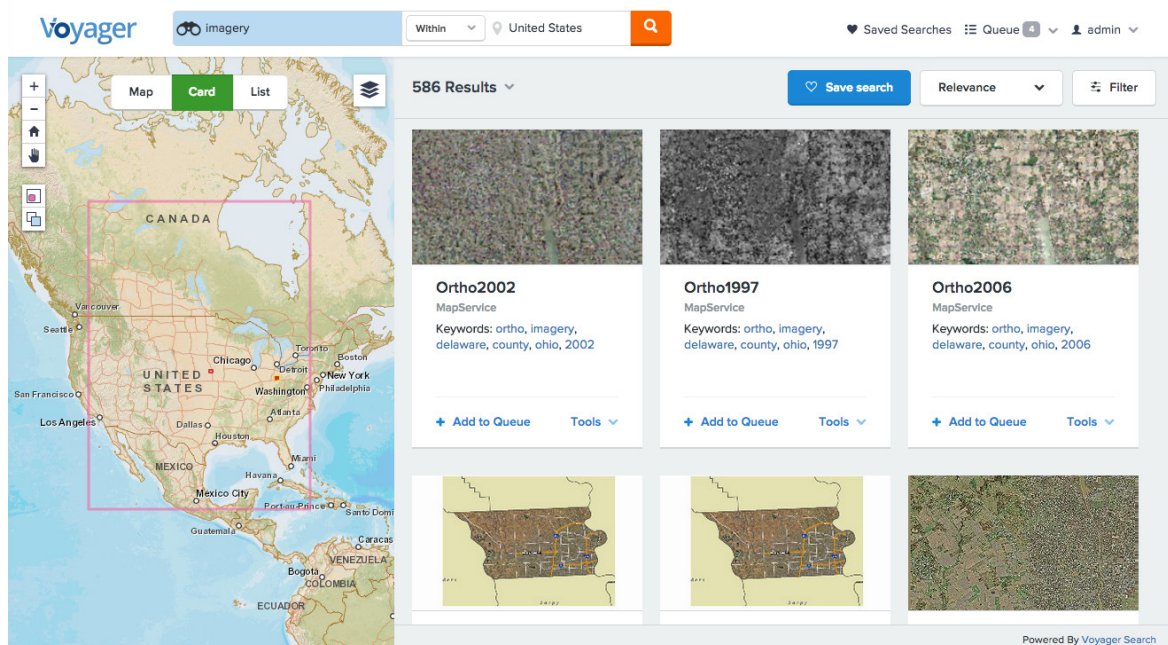
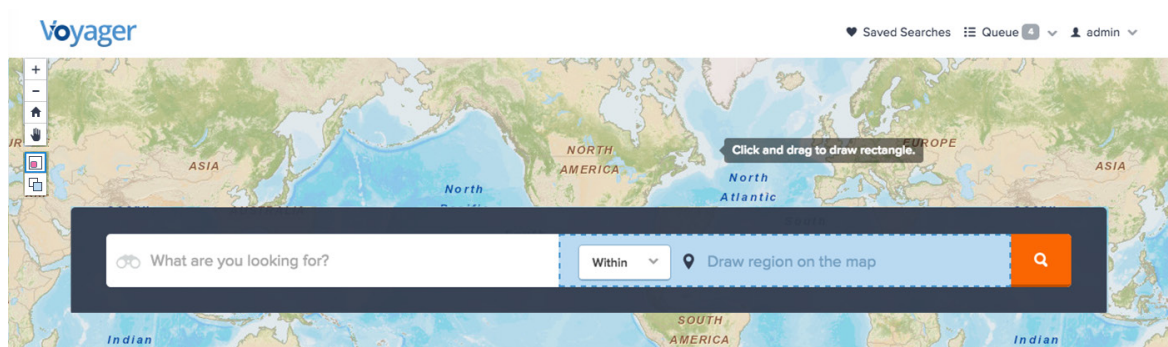


Voyager

Redefining Enterprise Search

Voyager is the marriage of modern search and spatial technologies. With Voyager, you will be able to find all of the content your organization has, whether it's stored down the hall or around the world. You won't have to migrate content or rearchitect workflows or build a search engine from scratch. Instead, simply install Voyager, index and find!

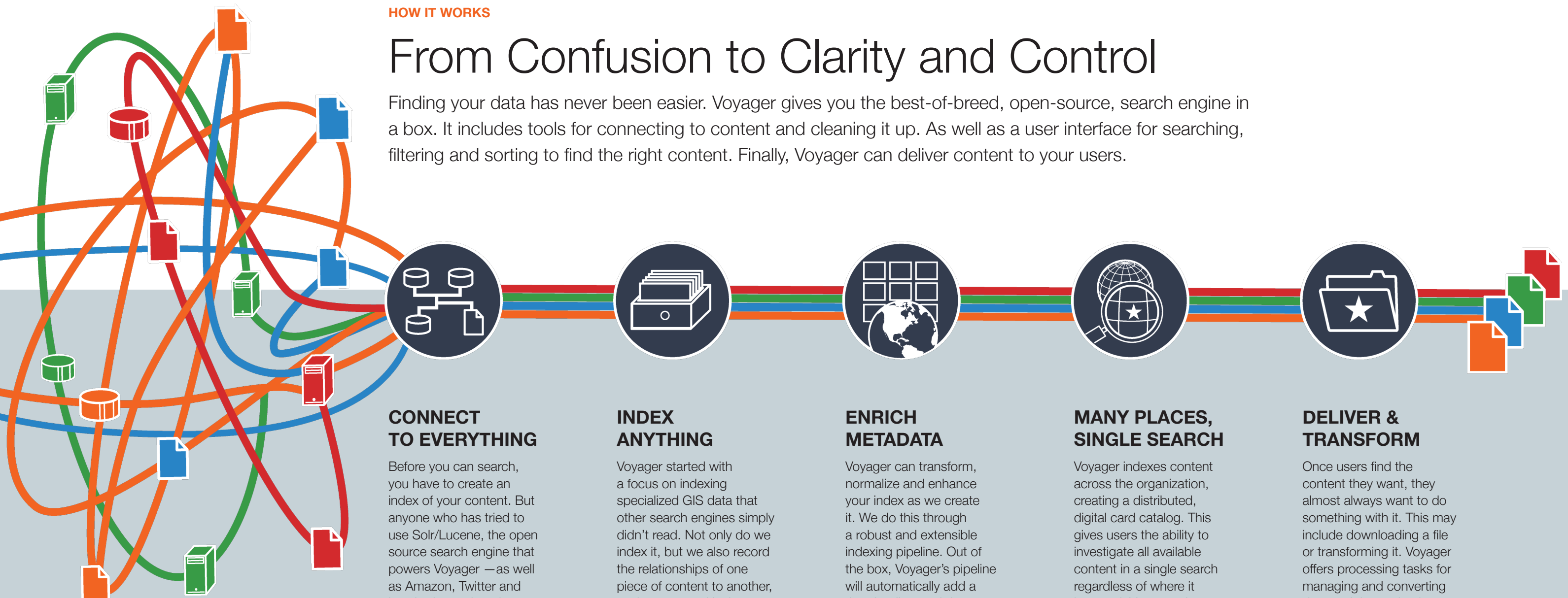




HOW IT WORKS

From Confusion to Clarity and Control

Finding your data has never been easier. Voyager gives you the best-of-breed, open-source, search engine in a box. It includes tools for connecting to content and cleaning it up. As well as a user interface for searching, filtering and sorting to find the right content. Finally, Voyager can deliver content to your users.



CONNECT TO EVERYTHING

Before you can search, you have to create an index of your content. But anyone who has tried to use Solr/Lucene, the open source search engine that powers Voyager — as well as Amazon, Twitter and hundreds of other sites — knows that even this first step is hard. But Voyager includes a management interface that makes it easy to connect to almost any type of content repository — whether it's a file server, a web service, a database or any other repository. Users simply enter the connection information and Voyager efficiently creates a record for each item you have.

INDEX ANYTHING

Voyager started with a focus on indexing specialized GIS data that other search engines simply didn't read. Not only do we index it, but we also record the relationships of one piece of content to another, such as a map and its layers or the data behind the map. Over the years we've expanded to read more than 1,700 different file formats. Our framework is extensible. So if there is still some format we don't yet understand, we can add it for you.

ENRICH METADATA

Voyager can transform, normalize and enhance your index as we create it. We do this through a robust and extensible indexing pipeline. Out of the box, Voyager's pipeline will automatically add a thumbnail to each item, record spatial context and note whether an item is a duplicate of another. Additionally, Voyager can be customized to append fields, geotag non-spatial documents, validate metadata, normalize schemas and much more.

MANY PLACES, SINGLE SEARCH

Voyager indexes content across the organization, creating a distributed, digital card catalog. This gives users the ability to investigate all available content in a single search regardless of where it is stored. Voyager also includes a modern, user interface so that our customers don't have to build a UI just to see what they've indexed. Voyager supports keyword search, placename search, map search, filtering, sorting, tagging and rating. It can be translated into many other languages, too. But if you don't like our UI, you can always use our APIs to build your own.

DELIVER & TRANSFORM

Once users find the content they want, they almost always want to do something with it. This may include downloading a file or transforming it. Voyager offers processing tasks for managing and converting data and then using it in some way. Voyager's processing tasks use Python to make calls to Esri's geoprocessing tools and to the Geospatial Data Abstraction Library (GDAL). New processing tasks can be developed to run a complex model, a custom script or another third party tool like FME Server.

Voyager

FEATURES	SERVER	SERVER PRO
Concurrent Users	5	Unlimited
Max. Documents Indexed	Unlimited	Unlimited
Fast, Modern Search Technology	●	●
Keyword Search	●	●
Map-Based Search	●	●
Placefinder Search	●	●
Sorting	●	●
Faceted Search	●	●
User Tagging	●	●
Promoting Your Favorite Content	●	●
Edit Fields to Add Metadata or Fix a Mistake	●	●
Report Creation	●	●
File Server Connector	●	●
Web Services Connector	●	●
CSW Connector	●	●
Database Connector	●	●
Comprehensive Index Management Controls	●	●
Index Updating Scheduler	●	●
Metadata Normalization Tools	●	●
Navigo User Interface	●	●
Search Result Export Tools	●	●
Saved Searches	●	●
ArcMap Add-in	●	●
Enterprise Authentication	■	●
Processing Task Framework	■	●
Bulk Metadata Editor	■	●
Move, Copy, Delete Content Management Tools	■	●
Federated Search	■	●
ArcGIS Portal Widget	■	■
sAPI Support	■	■
Doc. Management System (Sharepoint) Connector	◆	◆
Dropbox Connector	◆	◆
Data Classification	◆	◆
Geotagging	◆	◆

● Included in Product ■ Sold as Extension ◆ Sold as Extension with Professional Services

Learn more at www.voyagersearch.com